

This specification outlines the standard technical provision for visiting companies, artists and hirers, including available equipment, services, and any applicable charges. Please refer to the contractual agreement for details on technical staff and timings. Note that all information was correct at the time of writing but may be subject to change and availability.

Technical Support:

For all technical enquiries and correspondence please contact tech@bridgwater-tc.gov.uk

Access:

- No dedicated parking. On-street parking (Castle Street) is free for 1 hour and after 6pm.
- Loading access is available at the rear on Queens Street.
- Nearest car parks: West Quay and Angel Place.
- Postcode: TA6 3DD.
- No in-house load-in ramp; sloped access to the stage is available at the rear.
- No internal ramp or disabled access to the stage.

Auditorium:

- Multi-purpose auditorium seating or standing up to 160, plus a 35-seat balcony (right-hand access) with lighting box.
- Single public entrance/exit via corridor from front of house and bar.
- Semi-sprung wooden floor.

Please be aware of the Health and Safety Policy for Visiting Companies forms part of the contract with the visiting company.

Dimensions:

Area	Metric	Imperial
Full stage Depth (or to U/S Black Tabs)	9.95m (9.42m)	32ft 8ins (30ft 11ins)
Width of Pros	10.109m	33ft 2ins
Height of Grid	6.63m	21ft 9ins
Height of Pros (including header)	5.18m	17ft
Depth Pros to Cyc	6.93m	22ft 9ins
Depth of Apron	1.00m	9ft 10ins
SL Wing Width	2.13m	7ft
SR Wing Width	7.2m	23ft 8ins

Dressing room and backstage facilities:

- Currently has NO AUDIO OR VIDEO RELAY
- 2 dressing rooms with lighted mirrors
- Access to kitchen and toilets

Power

- 3x 32A Power supplies are situated DSR with two permanently used for the house rig
- 6 x 13A Local circuits on stage
- **There is no 3-phase power to stage**

Staging & Flooring:

- 9 x Stage weights
- The main stage is complete with 3 legs each side in soft masking which are permanently rigged
- The main stage is raked at 1.685 degrees but the apron is not raked

Projection:

Currently bought in for recharge – price to be set

Lighting:

Universe 1 – to stage right

Lighting Control & Dimmers

- Vari-lite FLX S24
- ADJ DMX splitter 5 and 3 pin (located SR wing)
- 2 x Zero88 Betapack 2 (16 Ways of Dimming)

LX Rigging Points

Front of House

- 1 x FOH Bar with
- 2 x Lighting Side bars running down each side of the auditorium

Onstage

- 3 x permanently installed floor standing grid with max weight of XXX
- 2 x Tab Bars which the soft masking is attached too
- 1 x Tab Track for upstage blacks
- 1 x Tab Track for main tabs.

Cabling

- Assorted XLR /DMX / 15A TRS
- Grelcos

NB: There is no Gel on site or haze/smoke machine

Lantern Stock:

Profiles	<ul style="list-style-type: none"> • 4 x Chauvet Ovation E-2 FC • 2 x Selecon Acclaim Axial
Fresnels and PC's	<ul style="list-style-type: none"> • 6 x Chauvet Ovation F-915FC • 8 x Selecon Acclaim PC 500w
Pars	<ul style="list-style-type: none"> • 6 x Elumin8 ALU Hex Par 64
Dimming	<ul style="list-style-type: none"> • 4 x Beta Pack 2's (2 installed SR)



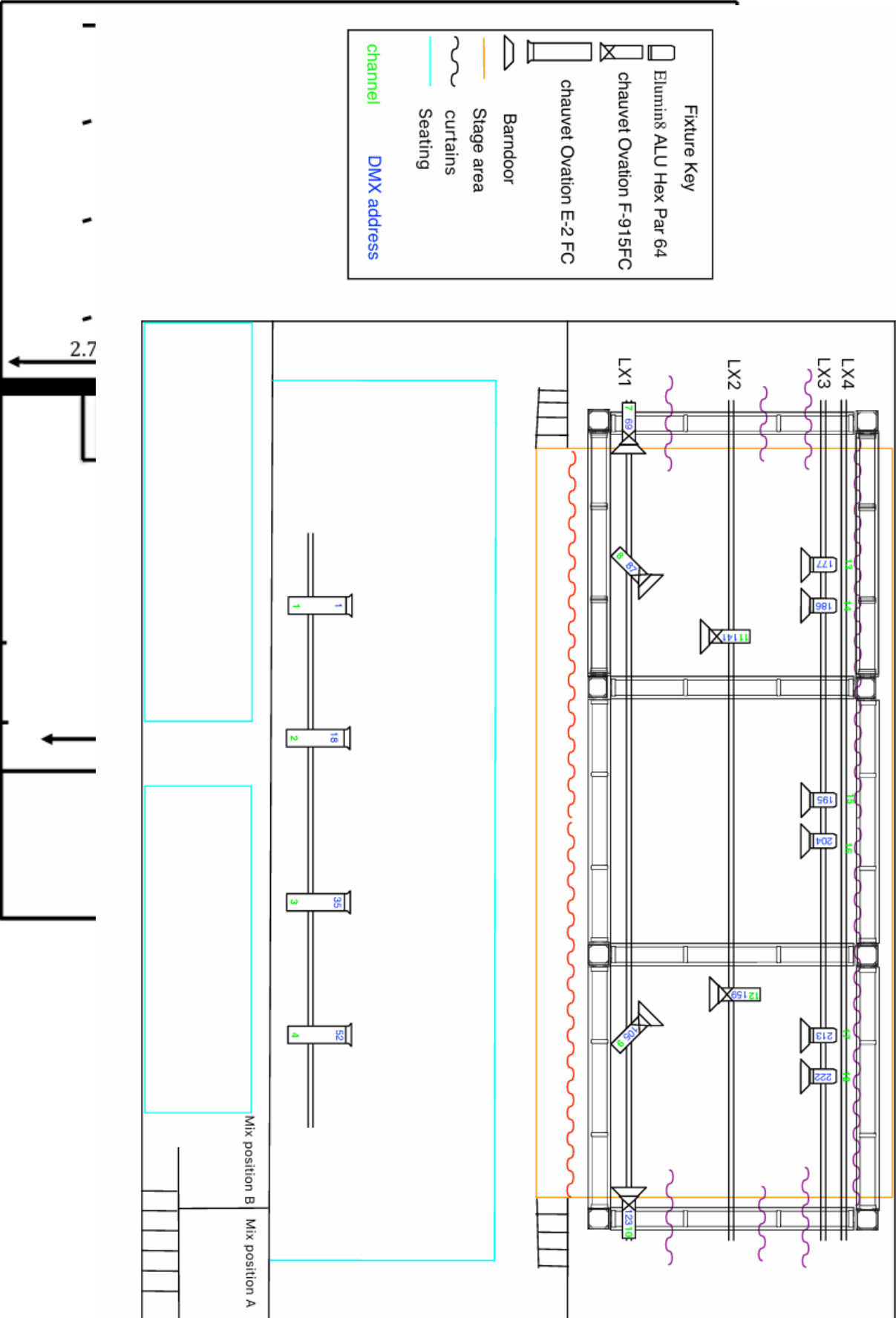
ARTS • CENTRE

Sound Equipment

An assortment of XLR / Jack leads are available

Desk	Allen & Heath QU-5	Mics and Mic Stands	<ul style="list-style-type: none"> • 3 x SM58 Vocal Dynamic Cardioid Microphone • 2 x C1000S MkIV • 3 x SM57 • 1 x BETA 52A • 6 x K&M 210/9 RSJ Mic Boom Stand All-Metal with Extending Boom Black • 2x K&M Short Mic Stands
Amps	<ul style="list-style-type: none"> • Crown XLS 1502 • Crown XLS 2502 • Behringer NX100 		
Speakers	<ul style="list-style-type: none"> • 2 x ELX200-15 • 2 x ELX118 <p>Above used for FOH PA</p> <ul style="list-style-type: none"> • 4x ART 712-A MK5 • 2x Yamaha S12E (Stage monitors) 		
Multicores / Tie Lines	<ul style="list-style-type: none"> • 1x CAT5E Line between control room & Stage Right • 15M analogue 12x4 multi 	Playback	<ul style="list-style-type: none"> • 2024 M4 mac mini • A16 iPad
DI Boxes	<ul style="list-style-type: none"> • 6 x Behringer ULTRA-DI DI100 • 2 x Behringer DI20 Ultra-DI 2 Channel 		

A



*Not to Scale